



Brain*trend*[®]

THE AEEG-MONITOR
FOR NEONATAL USE

AEEG-MONITORING WITH BRAINTREND

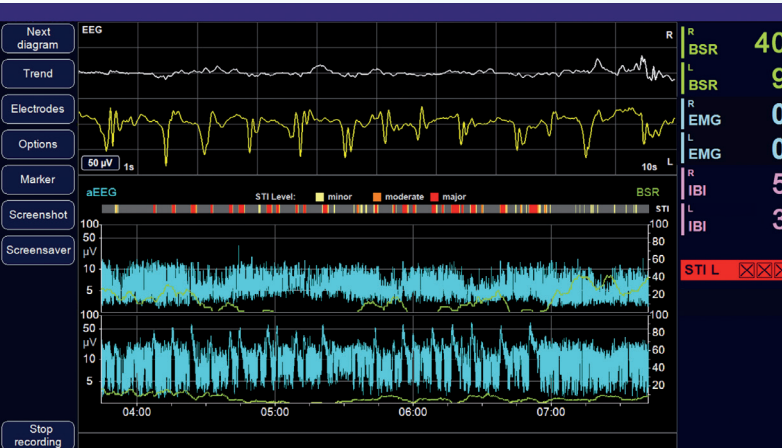
Neuroprotection, minimal handling and individually adjusted care are increasingly important in neonatal intensive care units.

With a cerebral function monitor (CFM), also known as EEG, these requirements can be met.

Recognize sleep phases, follow brain development or identify possible cramping events with our easy-to-use application.



- 1 or 2 channel original EEG und aEEG
- BSR (Burst-Suppression-Ratio):
Percentage of very flat EEG sections during a defined period of time
- STI:
Support in the detection of potential epilepsy
- IBI:
Inter Burst Interval



Screen during active measuring
(raw EEG and aEEG display)

- Screenshot and review function during ongoing measurement, storage up to 20 days
- EMG index
- Performance spectrum
- Automatic impedance measuring



Patient data input screen with display
of current impedance values

- Scrolling in ongoing measurements
- Marker function
- Storage of EEG data
- Convenient data backup
- Network connection available

ACCESSORIES



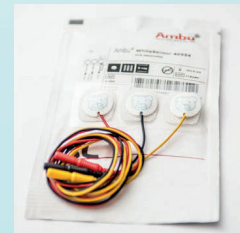
Patient cable 1-channel
for electrodes with 1.5 mm
DIN connector
Art.-No. 109160109



Patient cable 2-channel
for electrodes with 1.5 mm
DIN connector
Art.-No. 109160103



Cup electrode gold
Ø 6 mm, 50 cm cable
1.5 mm DIN connector
Art.-No. 1 091 60 110



Solid gel electrode
with cable and 1.5 mm
DIN connector
Art.-No. 1 091 60 104



Subdermal needle with
cable and 1.5 mm DIN
connector
Art.-No. 1 091 60 111
Twisted pair subdermal
needle, twisted cable
Art.-No. 1 091 60 112



Preparation cream
Art.-No. 1 091 60 105
Ten20 adhesive conduction
paste for use with Gold Cup
electrodes
Art.-No. 1 091 60 113



Template large
Art.-No. 1 091 60 107
Template small
Art.-No. 1 091 60 108
Skin marker pen
Art.-No. 1 091 60 106

TECHNICAL DATA

Braintrend

Power supply	100-240 Vac, 47-63 Hz, 1,60-0,70 A
Battery	Li-Ion battery pack
Battery runtime	approx. 60 minutes
Screen	15.6", resolution 1,366 x 768
Interfaces	USB 2.0, Ethernet
EEG inputs	Input impedance >10 M Ω
Bandwith	0.53 Hz to 45 Hz
Storage capacity	» 1,000 h
Dimensions	348 x 287 x 92 mm (WxHxD)
Weight	4.5 kg

Mobile stand

Dimensions	550 x 1,300 x 550 mm (WxHxD)
Weight	10.0 kg
Features	mobile, adjustable monitor angle, incl. mounting bracket for EEG module and tray



Fritz Stephan GmbH Medizintechnik
Kirchstraße 19
56412 Gackenbach
Germany



Tel +49 6439 9125 0
Fax +49 6439 9125 111
E-Mail info@stephan-gmbh.com
Web www.stephan-gmbh.com