



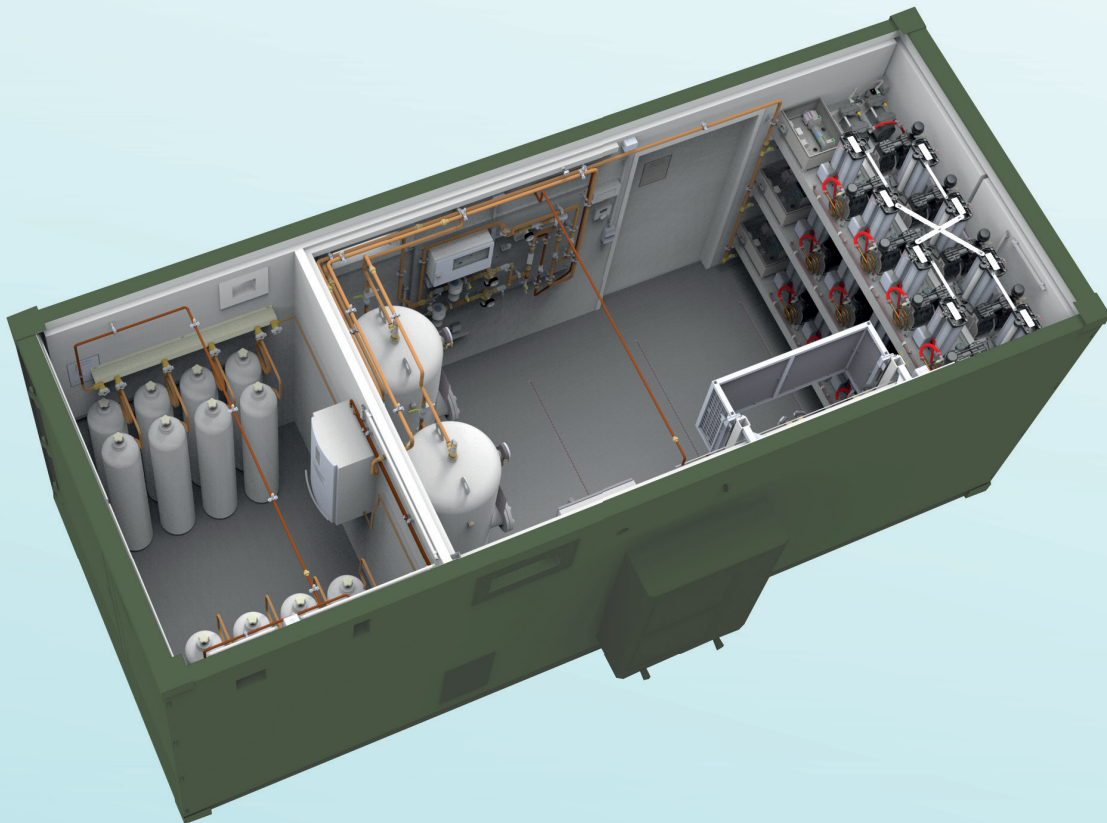
FSO₂ SYSTEMS

OXYGEN 93%
ANYTIME – ANYWHERE

ON-SITE OXYGEN CONCENTRATION

For more than three decades, Fritz Stephan GmbH has been manufacturing oxygen supply systems for medical purposes. State-of-the-art, patented multi-modular technology ensures maximum supply security while reducing operating and maintenance costs. This reliable, well-proven technology is used in medical facilities, emergency and disaster control organizations and military medical units around the world.

Multi-modular technology ensures maximum reliability. Oxygen supply is guaranteed anytime and anywhere. The platform design permits maintenance work even during operation, thus avoiding downtimes associated with conventional PSA systems. Satisfied customers worldwide confirm this advantage.



INNOVATIVE – INDEPENDENT – SAFE

Oxygen concentrators are a state-of-the-art, economical and, above all, independent alternative source of medical oxygen compared to the logistically complex cylinder supply.

This eliminates the risks associated with long supply chains of centralized oxygen generation, ensuring highest possible patient safety.

INTUITIVE TOUCHSCREEN FOR TRANSPARENCY AND SUPPLY SECURITY

+ Monitoring of platform operation

+ Monitoring of oxygen consumption

+ Alarm message display

+ Password protected

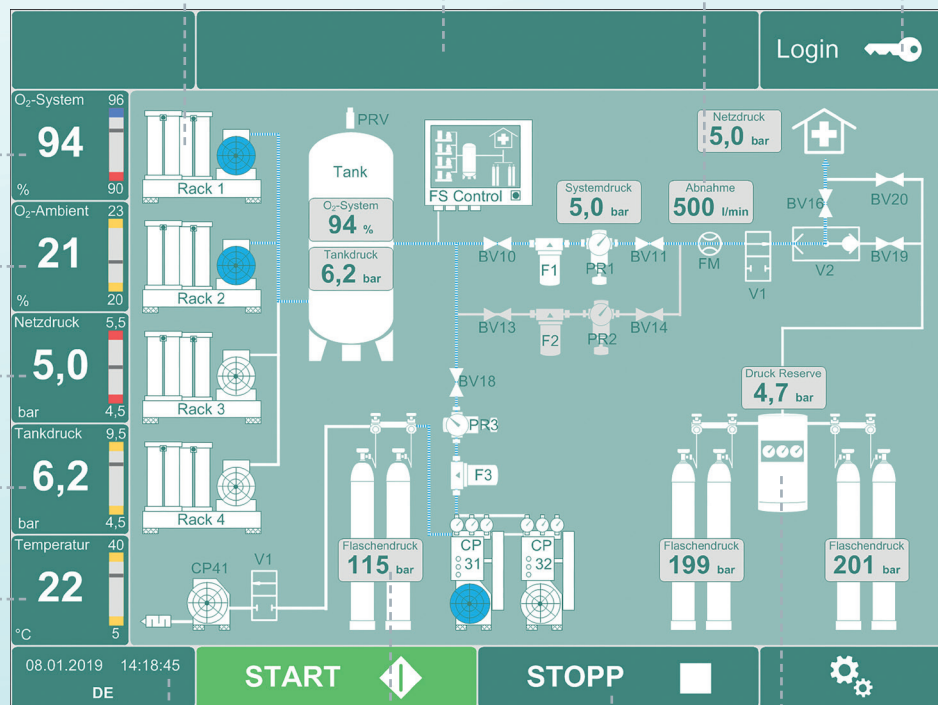
+ Monitoring of oxygen concentration (system)

+ Monitoring of oxygen concentration (ambient)

+ Monitoring of network pressure

+ Monitoring of tank pressure

+ Monitoring of ambient temperature

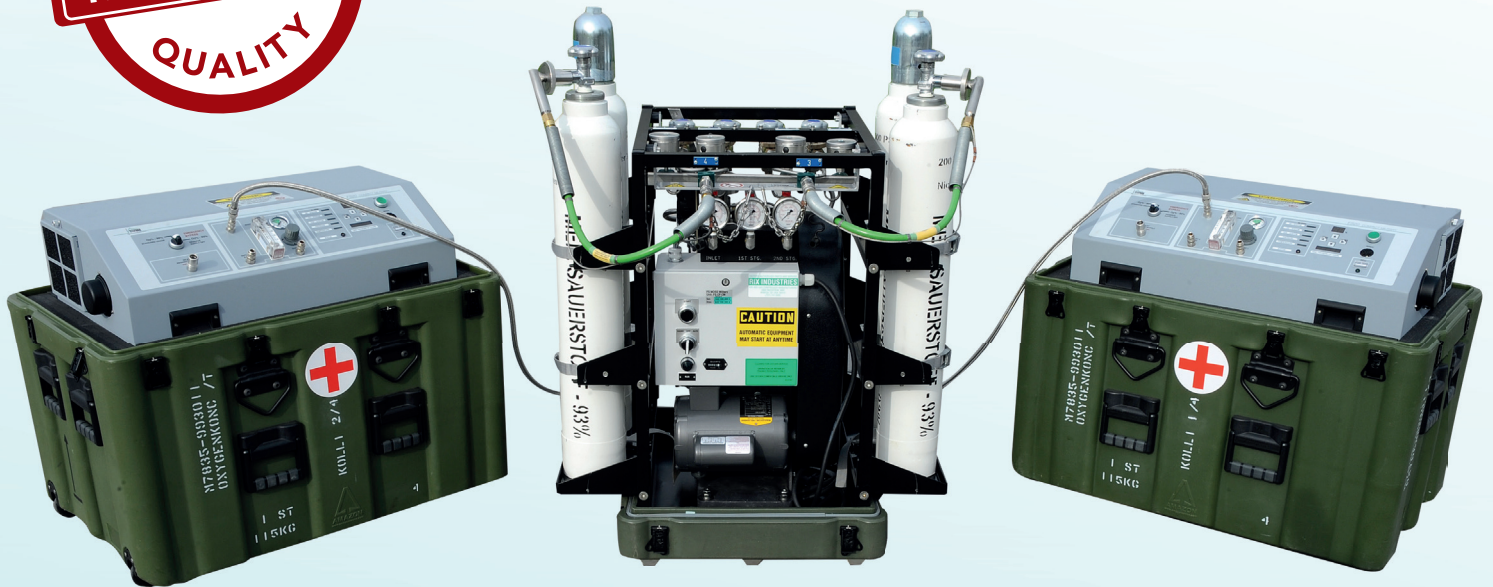


+ Monitoring of cylinder filling

+ Monitoring of reserve supply

+ Detailed reporting

+ Simple operation through start/stop function



MULTIMODULAR SOLUTIONS FOR ALL OXYGEN REQUIREMENTS

Our oxygen supply systems use state-of-the-art, multi-modular technology, an advanced version of the conventional 2-bed PSA concentration principle.

Key advantages are:

- + Oxygen available anywhere and anytime, quantity as required
- + Oil free operation
- + No danger of contamination
- + Minimum ramp up time (90 seconds)
- + Fail safe, redundant operation
- + Constant oxygen concentration independent of consumption
- + Low working pressure with subsequent oxygen compression
- + Platform system design with base load switching
- + Low maintenance cost, maintenance during operation
- + Reduced power consumption
- + Adaptable to client requirements and available space
- + Scalable from 20 l/min to 960 l/min
- + Direct feed into central oxygen supply pipelines or cylinder filling
- + ISO 7396-1:2016 compliant

OXYGEN SUPPLY ON DEMAND

FS oxygen supply systems operate on a demand-controlled and fully automated basis.

Oxygen contained in the ambient air is concentrated using multiple oxygen modules and stored in a buffer tank.

A portion of this oxygen is fed back through the modules to purge them for the next concentration cycle.

The system switches to standby mode once the oxygen in the integrated buffer tank reaches the desired pressure.

Patients are supplied from the buffer tank, which is automatically replenished by restarting the system as required. This ensures an uninterrupted supply of oxygen while minimizing operating times and operating costs.



FLEXIBLE – COMPACT – MODULAR

The rack and platform structure allows the highest possible flexibility for adapting to the desired capacity and space available.

Upgrades to higher system capacities are possible at any time, thus enabling mobile, portable „Plug & Play“ systems, container solutions as well as customized, stationary supply solutions.

TECHNICAL DATA

General specifications

Certification	Fritz Stephan GmbH is certified EU 2017/745 MDR and ISO 13485
Oxygen Quality	Oxygen 93 % compliant Ph. Eur. (#2455) / USP: CO ₂ < 300 ppm, CO < 5 ppm, NO < 2 ppm, NO ₂ < 2 ppm, SO ₂ < 1 ppm, Oil < 0.1 mg/m ³ , Water < 67 ppm Oil-free compression
Filtration Efficiency	99.99999 % @ 0.01 µm particle (Oxygen to Pipeline System)
Control Unit	Fully automated, pressure driven, integrated sensors
Oxygen Tank	Volumes 250 l, 500 l, 1000 l

OSS _{RACK}	FS60*	FS120*	FS240*
Oxygen Output:	60 l/min (3,6 m ³ /h) @ 5 bar	120 l/min (7,2 m ³ /h) @ 5 bar	240 l/min (14,4 m ³ /h) @ 5 bar
Platforms:	3 x FS20 PLATFORM	3 x FS40 PLATFORM	3 x FS80 PLATFORM
Dimensions (WxHxD):	960 x 2,300 x 850 mm	1,400 x 2,300 x 850 mm	2,400 x 2,300 x 850 mm
Weight:	approx. 275 kg	approx. 455 kg	approx. 850 kg
Power supply:	230 V / 50 Hz / 4.3 kVA	230 V / 50 Hz / 8.4 kVA	400 V / 50 Hz / 16.1 kVA
kVA Ventilation:	753 m ³ /h	1,476 m ³ /h	2,847 m ³ /h

OSS _{CONTAINER}	FS120**	FS240**	FS360**
Oxygen Output:	120 l/min (7,2 m ³ /h) @ 5 bar	240 l/min (14,4 m ³ /h) @ 5 bar	360 l/min (21,6 m ³ /h) @ 5 bar
Dimensions (WxHxD):	6,058 x 2,438 x 2,591 mm	6,058 x 2,438 x 2,591 mm	6,058 x 2,438 x 2,591 mm
Weight:	approx. 5,700 kg	approx. 5,985 kg	approx. 6,200 kg
Power supply:	400 V / 50 Hz / 24.7 kVA	400 V / 50 Hz / 32.6 kVA	400 V / 50 Hz / 45.7 kVA
kVA Ventilation:	1,368 m ³ /h	2,631 m ³ /h	3,969 m ³ /h

OSS _{COMPACT}	FS20**	FS CF**	FS MOSS**
Oxygen Output:	20 l/min (1,2 m ³ /h) @ 5 bar	33 l/min (1,98 m ³ /h) @ 200 bar	2x 20 l/min (2,4 m ³ /h) @ 5 bar 33 l/min (1,98 m ³ /h) @ 200 bar
Dimensions WxHxD):	900 x 600 x 800 mm	685 x 585 x 925 mm	900 x 600 x 800 mm (2x) 684 x 583 x 925 mm (1x)
Weight:	approx. 115 kg	approx. 146 kg	approx. 376 kg
Power supply:	230 V / 50 Hz / 1.5 kVA	230 V / 50 Hz / 1.1 kVA	230 V / 50 Hz / 4.1 kVA
kVA Ventilation:	254 m ³ /h	165 m ³ /h	673 m ³ /h

* Does not include, Control / Filter system, Tanks, Reserve system.
Examples of system specifications; other capacities available on request.
** Complete „Plug and Play“ systems



Fritz Stephan GmbH Medizintechnik
Kirchstraße 19
56412 Gackebach
Germany



Tel +49 6439 9125 0
Fax +49 6439 9125 111
E-Mail info@stephan-gmbh.com
Web www.stephan-gmbh.com